

## Printing color copies of data from TRIAND

The screenshot shows the TRIAND Report Builder interface. The left sidebar contains a navigation menu with options like 'easy LICENSURE', 'easy SUPPORT', 'easy CONNECT', 'easy DATA', 'Data Warehouse', 'Report Builder', 'Reports', 'Provisioning', 'easy STUDENT', 'easy READING', 'easy TEST', 'easy TEACH', 'easy SCHEDULE', and 'easy COMMUNITY'. The 'Report Builder' option is highlighted, and a red arrow points to it. The main content area is titled 'Report' and shows search criteria for 'Benchmark', 'Grade', and 'Subject'. The 'Display Configuration' section has three sub-sections: 'Each Result Row Contains', 'Show Columns For', and 'Show Cell Totals As'. The 'Individual Student Scoresheets' option is selected under 'Each Result Row Contains'. Under 'Show Columns For', 'State', 'Region', 'District', and 'School' are selected. Under 'Show Cell Totals As', 'Percents' is selected.

- 1) Open TRIAND and go to the “Report Builder”
- 2) Under “Search Criteria”, choose the “Name”, “Grade”, and “Subject”
- 3) Check all other information that you want to be on your report.
- 4) After you have checked all of the boxes, click “View Report” in top right-hand corner.

This is a close-up screenshot of the 'View Report' button in the TRIAND interface. A red arrow points to the button. Below the button are dropdown menus for 'Grade' (03) and 'Subject' (Mathematics). Below that is the 'Show Cell Totals As' section with 'Percents' selected.

5) You should now see data similar to what is shown below.

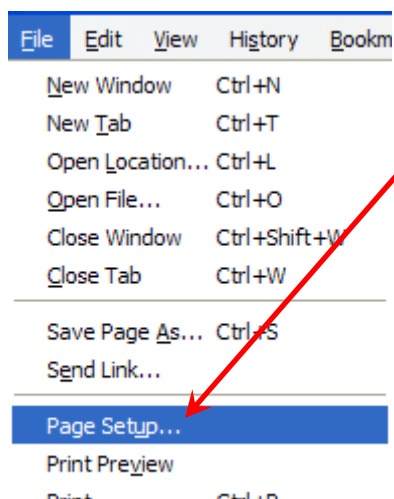
		Benchmark - 3rd Grade Mathematics - 07/08 - YR - English - Mathematics Target Test Pre-Test Grade 3 2007-08																					
		Score	Passing	Commended Performance	1	2	3	4	5	6	7	8	9	10	11	12	13	14	15	16	17	18	19
First	Last	Y/N	Y/N		3.NO.1.3.2	3.A.5.3.2	3.DAP.17.3.2	3.NO.2.3.4	3.M.13.3.5	3.G.8.3.3	3.NO.2.3.2	3.NO.1.3.5	3.A.4.3.4	3.NO.1.3.6	3.G.10.3.1	3.M.12.3.1	3.M.12.3.2	3.G.11.3.1	3.G.8.3.2	3.M.13.3.8	3.A.6.3.1	3.M.13.3.9	3.A.4.3.1
		45.0	N	N	D	B	A	A	B	D	C	A	C	A	D	B	C	A	A	B	C	C	C
		57.0	N	N	D	B	A	C	A	D	C	C	C	A	D	B	C	A	C	A	A	B	C
		38.0	N	N	D	D	A	D	D	D	A	A	C	A	D	B	C	A	B	C	A	C	C
		13.0	N	N	C	D	C	A	C	D	D	B	A	C		C	A	D	A	C	C	C	B
		53.0	N	N	D	D	A	D	D	B	C	D	C	A	D	B	D	D	D	A	B	B	C
		48.0	N	N	D	B	D	A	D	C	A	C	B	B	D	B	D	D	D	D	B	B	C
		48.0	N	N	D	A	A	D	D	D	C	A	C	A	D	A	C	A	B	D	D	B	C
		25.0	N	N	D	A	B	A	A	B	C	D	A	C	B	*	C	*	B	D	B	C	B
		57.0	N	N	D	A	B	C	D	D	C	D	C	A	D	B	C	A	C	D	B	B	C
		48.0	N	N	B	C	A	C	C	B	C	C	C	C	B	B	C	A	C	A	C	B	C
		30.0	N	N	C	C	A	D	B	D	C	A	D	D	C	B	C	A	C	A	A	C	A
		40.0	N	N	C	D	A	D	C	B	C	D	C	A	D	B	C	A	C	D	D	C	B
		38.0	N	N	D	A	A	C	D	D	C	D	C	C	C	B	C	B	B	B	A	C	C
		73.0	Y	N	D	A	D	C	C	A	C	D	C	C	C	B	C	A	C	A	C	B	C
		43.0	N	N	D	B	C	A	C	D	C	A	B	*	C	B	C	C	C	A	B	B	C
		57.0	N	N	D	B	A	C	D	B	C	D	B	A	D	B	C	A	A	D	C	B	C
		45.0	N	N	D	B	A	C	D	B	C	D	C	B	A	B	D	A	C	A	B	B	C
		25.0	N	N	D	D	A	A	C	D	B	C	B	B	C	B	A	B	B	A	B	D	B
		80.0	Y	N	D	B	B	C	D	D	C	D	C	A	C	B	C	A	C	A	C	B	C

6) At the bottom of the page you can click the little printer to see a print view.

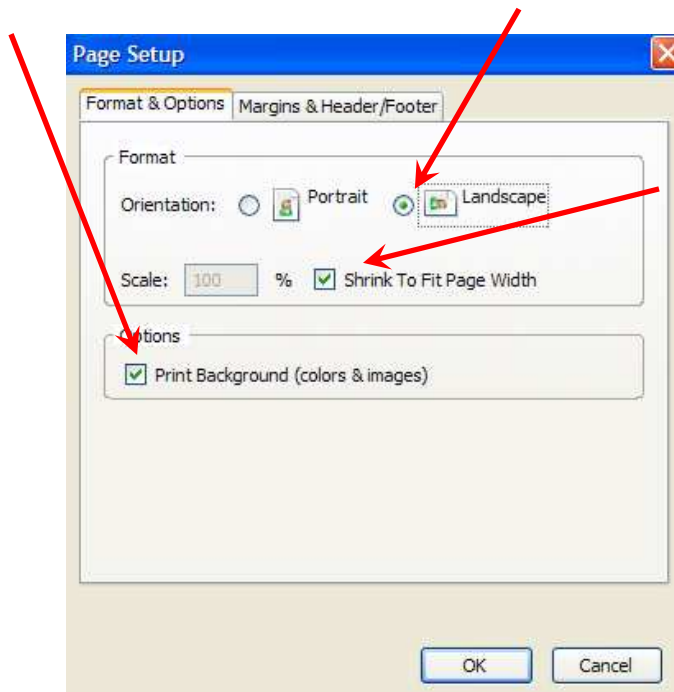


This view allows you to see all of the data at one time.

7) At the top of your screen choose "file" and then "page setup"



8) On the “Format & Options” tab, make sure the following boxes are checked: “Landscape”, “Shrink to Fit Page Width”, and “Print Background (colors & images)”; then click “OK”.



9) Go back to “File”, click “Print” and choose the printer you want to print your graph on.

